



42 Merlin Crescent, Edgware, HA8 6JE

Asking Price £699,950

A spacious, four-bedroom, two bathroom family home in this desirable Edgware location.

Accommodation comprises Four Bedrooms, Two Bathrooms and Three Reception Rooms.

Features include an entrance porch, a guest cloakroom, a private garden, and off-street parking.

Situated in this ideal location close to transport, local schooling (including Krishna Avanti and Camrose Primary) and Chandos recreational ground.

Call vendor's agents Benjamin Stevens now to arrange a viewing!

Entrance Hallway



Kitchen Area



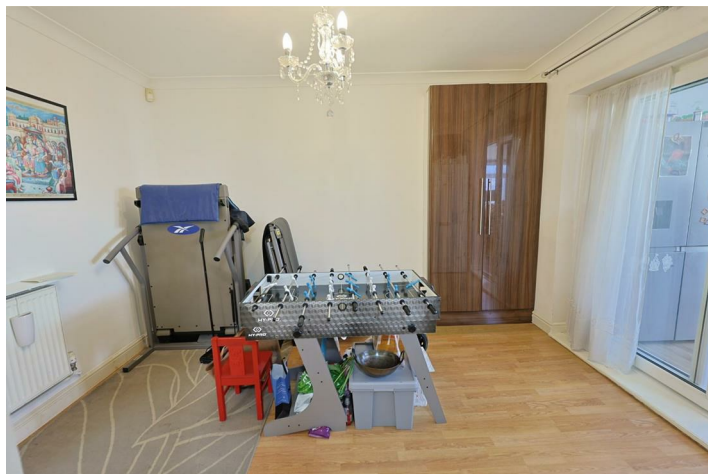
Reception Room 12'9 (into bay) x 11'3 (3.89m (into bay) x 3.43m)



Guest Cloakroom



Kitchen/Dining Room 17'6 (max) x 12'4 (max) (5.33m (max) x 3.76m (max))



Dining Room 17'5 x 9'6 (5.31m x 2.90m)



Bedroom Two 12'4 x 10'2 (3.76m x 3.10m)



Family Bathroom



Bedroom Three 13'7 (into bay) x 10'7 (4.14m (into bay) x 3.23m)



Bedroom One 18'1 (max) x 10'5 (max) (5.51m (max) x 3.18m (max))



Bedroom Four 7'1 x 6'11 (2.16m x 2.11m)



En-suite



Garden



Rear aspect



Floor Plan

